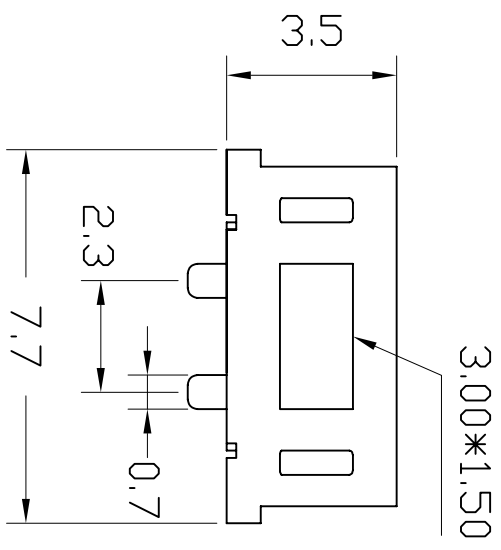
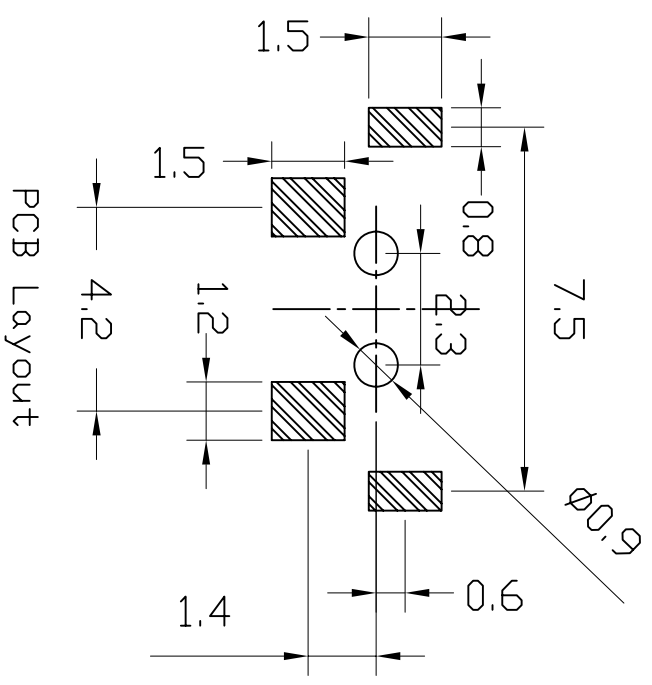
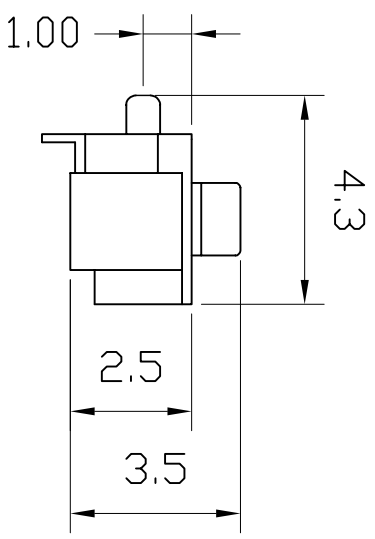
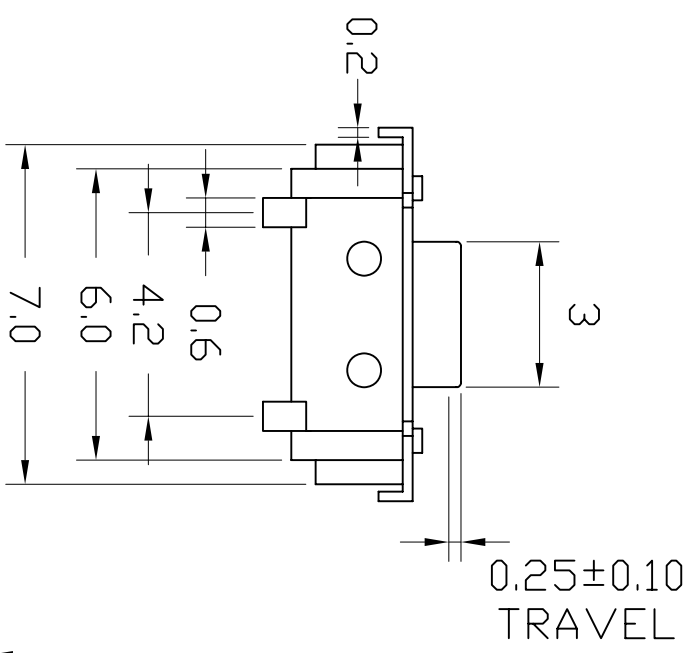


REV.	ECN NO.	LOCAS.	DESCRIPTION	DATE	DESIGN
A0			RELEASE TO CUSTOMER		HANG
B					HANG



备注:

1. 额定负荷: DC12V 0.1A
2. 接触电阻: $\leq 30M\Omega$
3. 绝缘电阻: $\geq 100M\Omega$
4. 耐压: 250V AC/1minute
5. 工作寿命: 50,000次
6. 相对湿度: (40°C) $\leq 95\%$
7. 环境温度: $-25^{\sim}+70^{\circ}C$
8. 耐温: 260°C

材质:

1. 嵌件: 磷铜带, 镀银
2. 基座: 米黄色
3. 弹片: 不锈钢覆银带
4. 盖板: 磷铜带, 镀银
5. 按钮: 尼龙, 黑色

LASTAR

Lastar Technology CO., LTD

DRAW NO.:	73E4-3509	DATE:	080505	DRAW NAME:	Tact Switch SMT 1188E
DESIGN:	HANG	CHECK:	WANGCM	UNIT:	P/N NO. TS-73E4-3509
CHECK:	WANGCM	APPROVED:	HUYX	SHEET:	FILE:
				mm	MODEL:
				N/A	REV. B
					SCALE N/A

DIM	TOL	DIM	TOL
X.	± 0.30	X'	$\pm 4.0'$
X.X	± 0.25	X.X'	$\pm 3.0'$
X.XX	± 0.20	X.XX'	$\pm 2.0'$
X.XXX	± 0.10	X.XXX'	$\pm 1.0'$

THIS DRAWING CONTAINS INFORMATION THAT IS PROVIDED BY LASTAR TECHNOLOGY AND SHOULD NOT BE REPRODUCED WITHOUT PERMISSION